

Arena SPC Floor

TOOLS & MATERIALS

- Hammer (1 lb.)
- Tape Measure
- Pencil
- Saw, Utility Knife
- 3/8" (10mm) Wedges*
- Tapping Block*
- Last Board Puller*
- Mask (3M™ Tekk Protection™ Sanding and Fibreglass Disposable Respirator, 8200HB5-A), or equivalent.

When sawing pieces off the planks, use a fine-toothed hand saw, jigsaw, chop-saw, guillotine or utility knife.

*Note: available in a TORLYS Installation Kit

**OPTIONAL : for ease of installation and repairs use TORLYS Bulldog™ tool.

GENERAL REQUIREMENTS FOR ALL SUBFLOORING

Substrates should be structurally sound and firm. Before installing flooring, ensure the subfloor is flat within 1/8" – 3.2mm in 6ft – 1.8m or 3/16" – 4.8mm in 10ft – 3m. Irregularities in the subfloor should be smoothed using a cement-based, polymer-modified leveling compound. A 6mil (0.15mm) poly vapour barrier must be installed on crawl space floor*

* In construction terminology, a crawl space is defined as: "a shallow space below the living quarters of a house, normally enclosed by the foundation wall...".

RADIANT HEATING SYSTEMS

Marquee Arena SPC floors are guaranteed for installation over radiant-heated subfloors. For details and limitations, please check the ["TORLYS Flooring Warranty and Instructions for installation over radiant-heated subfloors"](#). Visit our website at: www.torlys.com, for detailed information.

ROOM & MATERIAL PREPARATION

- Remove all existing moulding.
- Allow vinyl flooring to acclimate to room temperature between 60°F -80°F (16°C - 27°C) by placing the packaged flooring flat in the room for a minimum of 48 hours prior to installation. Do not remove the plastic wrapping.

- Flooring should be installed and maintained in a climate controlled environment with ambient temperature between 60°F - 80°F (16°C - 27°C) and a relative humidity of 35% - 65%.
- Check door clearances and make necessary adjustments before laying the flooring. Door jambs should be undercut to accommodate the thickness of the flooring.
- Marquee Arena SPC has an attached foam underlay and therefore no additional underlayment is required.
- If the room has electric baseboard heaters, leave a minimum of ½ inch (13 mm) between the surface of the flooring and the bottom of the heaters, allowing heat to circulate.
- Use T-mouldings for rooms wider or longer than 60' feet and openings less than 30" (76 cm).
- Inspect each plank for defects prior to installation. Do not install defective planks; installation of defective planks implies acceptance of material. Work out of several cartons at the same time to ensure a mixture of color and shade.
- Spacer wedges must be used along any vertical surface. When the installation is complete, these spacers will be removed leaving a 3/16"(4.8 mm) expansion gap. This gap is necessary because vinyl expands and contracts with temperature and humidity changes. The gap provided will prevent the flooring from being damaged during those changes
- For all first row planks, remove the tongue on the long edge.
- When assembling the planks, especially in the first row, you must make sure that the pieces are locked in square and flush. This will make subsequent row assembly easier.

WET AREAS

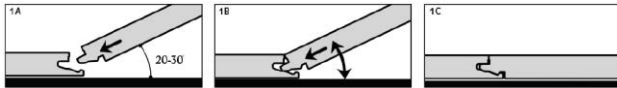
Do not install in saunas, swimming pool areas and other similar extreme wet areas.

Marquee Arena SPC is impervious to water, however moisture issues should be rectified at the jobsite before installation to prevent damage to the substrate and surrounding structure, and to discourage the growth of mold and mildew. The use of a 6-mil (0.15 mm) polyethylene film is highly recommended for all installations.

INSTALLATION PROCEDURE

Utilizing the Uniclic locking system on all four sides, Marquee Arena SPC can be installed using either, or a combination of both installation methods detailed below.

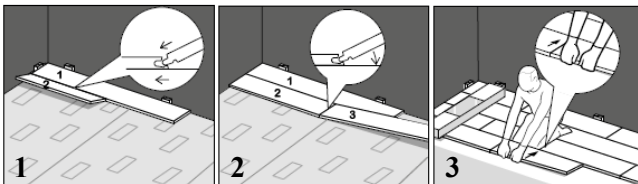
The angle method is most commonly used due to the ease and speed of installation.



Beginning in the left corner of the room, lay the first full board (board 1) using spacer wedges to ensure proper expansion space. See **Figure 1**.

With board 2 at an angle of 20°-30°, insert the tongue of the long side into the long side groove of board 1; the locking system is fully engaged when board 2 is lowered into position.

To install board 3 (**Figure 2**), the short sides must first be connected using the angling method. When you raise board 3 to angle the length into position, board 2 will also raise because the short sides are already connected. Using both hands (**Figure 3**), gentle pressure and a rocking motion the long side locking system will automatically click into place.

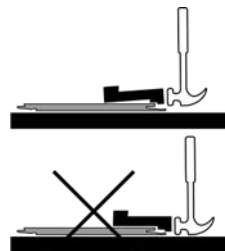


The stagger between the head joints should be minimum 12" (30cm). Cut pieces should be minimum 8" (20 cm).

In challenging areas where you cannot angle-click the floor, (e.g. when installing final row or around door jambs) it may be necessary to tap or snap the boards into place. Using a TORLYS tapping block and hammer, the floor can be installed using the **Horizontal Installation Method**

Correct positioning of the tapping block is critical to avoid damage to the locking system. Similarly, alternative tapping blocks and/or a piece of flooring may also damage the locking system.

For a short edge, use several small taps until the planks click together completely. For a long edge, begin tapping lightly at the corner of a plank until the joint has clicked together. Repeat the process approximately every 6" (15cm) until



the entire long edge of the plank has clicked in with the next plank.

Never attempt to knock the joint into place with one hit.

Where a tapping block and hammer will not fit use a "Last-Board Puller" or the TORLYS Bulldog™ tool to pull the exposed joints tight.

The tapping block can also be used to gently tighten small gaps if needed.

CARE & MAINTENANCE

Do	Do Not
Sweep and vacuum regularly using an attachment designed for hard surface flooring.	Do not use a vacuum with rotating beater bars, buffers, or other similar products.
Use a humidifier, dehumidifier, or air conditioner to help maintain temperature and humidity levels.	Do not let the ambient conditions fall outside the required range of 60°F - 80°F and 35%-65% RH.
Use only pH neutral cleaning solutions formulated for flooring.	Never use highly acidic or alkaline cleaners, non-recommended commercial cleaners, polishes or waxes or a treated mop that has been used to clean other floors or furniture.
Clean up spills immediately using a damp cloth or paper towel.	Do not leave standing liquids of any kind.
Close your curtains or blinds where continuous or extreme sunlight will shine on your floor.	Do not expose flooring to direct sunlight.
Install floor protectors on furniture legs and use coaster cups for heavy pieces. Protective mats under chairs with castors is mandatory.	Do not try to slide heavy objects across floor. Avoid high heels or shoes that need repair.
Place walk-off mats at all entrances; use only mats labelled as non-staining.	Do not allow sand and grit to build up on the floor.

MINOR REPAIRS & BOARD REPLACEMENTS

In the event that accidental damage occurs, minor scratches or dents can be repaired using a Flooring Touchup or Color-fill Kit.

For damages that can't be repaired, the the TORLYS Bulldog™ Easy Plank Replacer allows you to replace a damaged board quickly and easily.

Head Office: TORLYS Inc.,
1900 Derry Road E., Mississauga, Ontario, L5S 1Y6 Canada
www.torlys.com